



10 August 2022

Heritage Council of NSW  
Locked Bag 5020  
PARRAMATTA NSW 2124

[heritagemailbox@environment.nsw.gov.au](mailto:heritagemailbox@environment.nsw.gov.au)

**Link to listing under consideration:**

<https://apps.environment.nsw.gov.au/dpcheritageapp/ViewHeritageItemDetails.aspx?ID=5068028>

## **AUSTRALIAN INSTITUTE OF LANDSCAPE ARCHITECTS (AILA) SUBMISSION**

Landscape Heritage : 'Kameruka Golf Course'  
Address: West Kameruka Road, Kameruka

### **Preface**

The Australian Institute of Landscape Architects (AILA) is the peak national body for the Landscape Architecture. AILA champions quality design for public open spaces, stronger communities, and greater environmental stewardship. We provide our members with training, recognition, and a community of practice, to share knowledge, ideas and action. With our members, we anticipate and develop a leading position on issues of concern in landscape architecture. Alongside government and allied professions, we work to improve the design and planning of the natural and built environment.

In operation since 1966, AILA represents over 3,500 landscape architects and promotes excellence in planning, design and management for life outdoors. Committed to designing and creating better spaces in Australia, landscape architects have the skills and expertise to improve the nation's liveability through a unique approach to planning issues via innovative integrated solutions. In doing so, landscape architects contribute towards better environmental, social and economic outcomes for all Australians.

A central purpose of the AILA (NSW) Landscape Heritage Group is to inform, inspire and enrich the culture of the discipline of landscape architecture in Australia and particularly the identification and understanding of both natural and cultural landscapes in NSW together with the role of such knowledge in the processes of planning and design.

### **Statement**

The Australian Institute of Landscape Architects (AILA) **SUPPORTS** the proposed listing of 'Kameruka Golf Course', West Kameruka Road, Kameruka, and recommends consideration of a group listing to include the Kameruka Estate, together with the golf course, as Kameruka landscape heritage.



## Recommendations

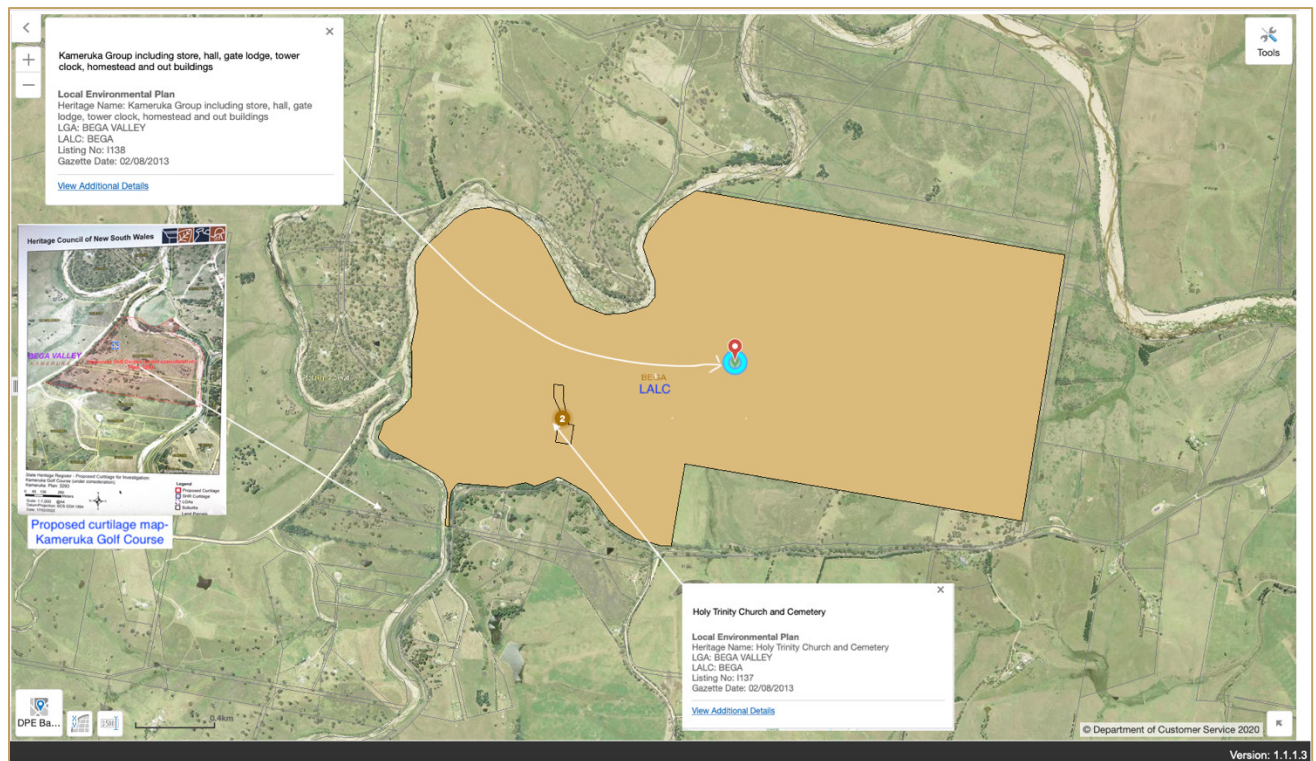
AILA provides support for listing on the State Heritage Register of Kameruka Golf Course for rarity and representative values as;

- the oldest golf course in its original design layout in NSW and Australia
- remaining in its original form as at completion in 1915
- the only remaining example of a complete golf course in the 'Penal Golf' architecture style in NSW and Australia
- one of only a few such golf courses existing worldwide

We recognise Kameruka golf course has technical, aesthetic, historical, research, archaeological and associative value for its connection to;

- Scottish professional golfer-designer Laurie Auchterlonie,
- builder Ernest Banks,
- Sir Robert Lucas-Tooth,
- WW1 commemoration,
- adaptation in Australia of British design ideas and
- the development of Kameruka Estate.

In addition to the listing of the golf course, AILA recommends the consideration of Sir Robert's vision and the remaining entire Kameruka landscape heritage, including, Kameruka Estate, the private village (including store, hall, gate lodge, tower clock, homestead and outbuildings) and additional facilities for tourists (the golf course and Lords View oval), in a group listing on the State Heritage Register. The significance of Kameruka and Candelo Creek to Yuin and other First Nations people, throughout time, could be integral to the SHR group listing.





**Figure 1.** Diagram of relationship between the Kameruka Golf Course listing under consideration (inset pasted, left) and potential consideration of the entire Kameruka Group on the SHR (indicated by the blue circle). Source : MSW Heritage Spatial Viewer, Department of Customer Service.

AILA provides support for State Heritage listing 'Kameruka Golf Course' for rarity, intactness and the likely high degree of representative significance as the oldest complete golf course in the 'Penal Golf' style of architecture. AILA recommends rigorous research be carried out by qualified Registered Landscape Architects to assess the qualities of Kameruka landscape heritage as a whole, and to guide the landscape conservation policies, planning and management.

**AILA provides support for State Heritage listing 'Kameruka Golf Course' for rarity, intactness and the likely high degree of representative significance as the oldest complete golf course in the 'Penal Golf' style of architecture. AILA recommends rigorous research be carried out by qualified Registered Landscape Architects to assess the qualities of Kameruka landscape heritage as a whole, and to guide the landscape conservation policies, planning and management.**

## Conclusion

Thank you for the opportunity to comment on the listing under consideration. We would be pleased to provide further consultation and information.

Yours sincerely,

Sincerely yours,

Tanya Wood

AILA NSW President

## SUBMISSION TEAM

AILA Landscape Heritage Group.

AUTHORS: PROF. EMERITUS HELEN ARMSTRONG AM, FAILA | OI CHOONG, FAILA

CRAIG BURTON, FAILA | MATTHEW TAYLOR, AILA RLA | ANNABEL MURRAY, AILA RLA